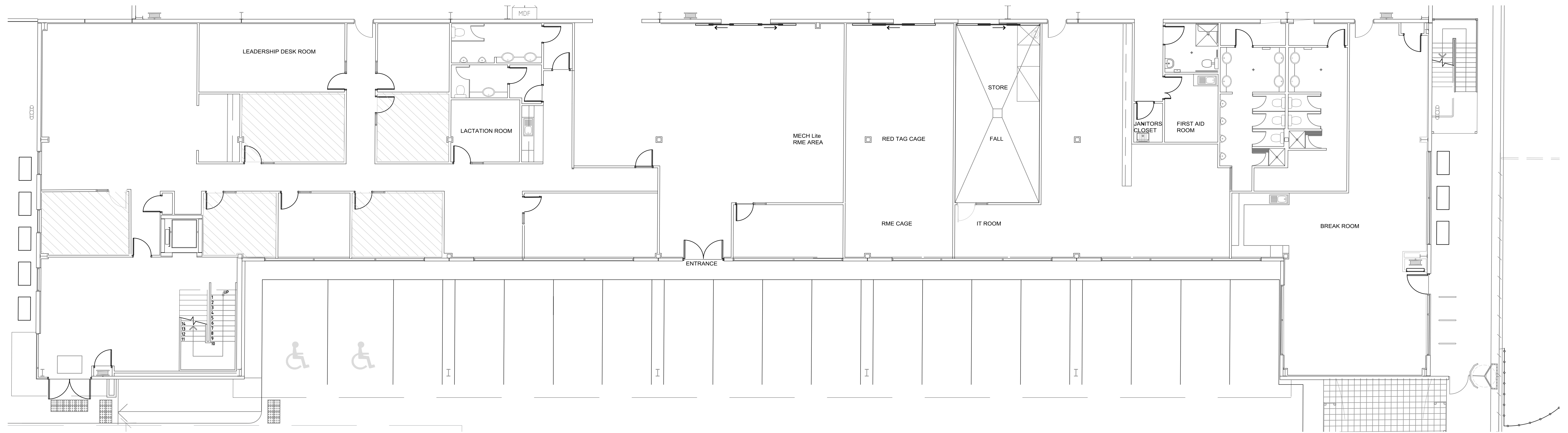
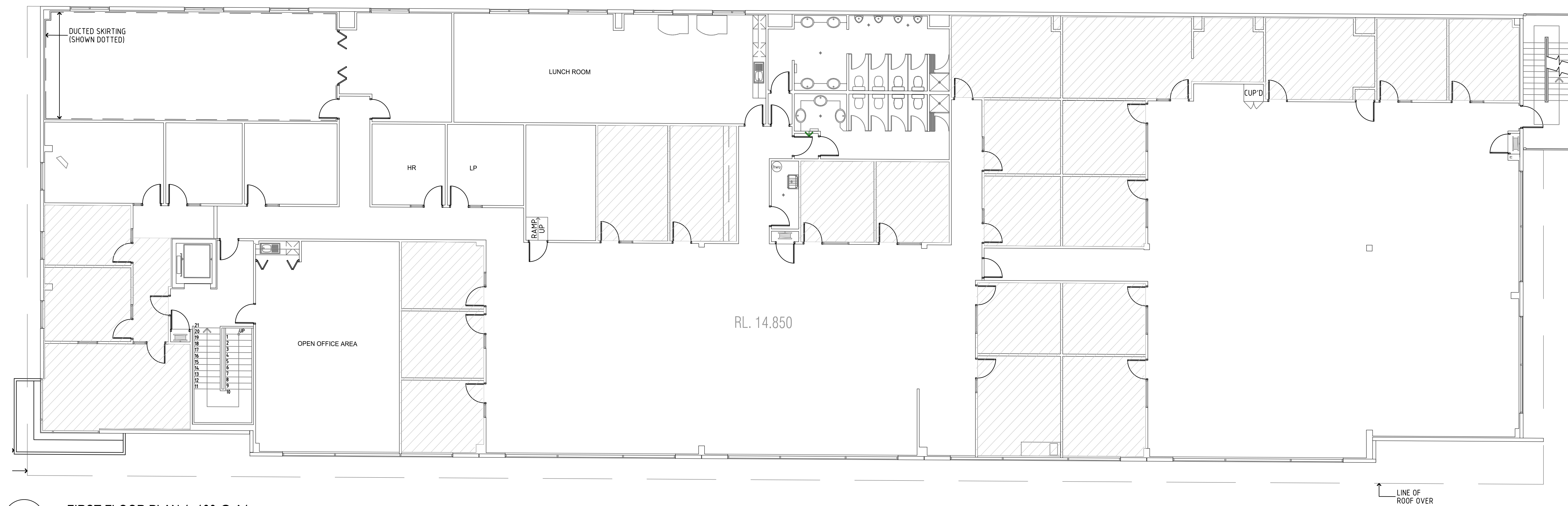


1 SITE PLAN 1:500 @ A1



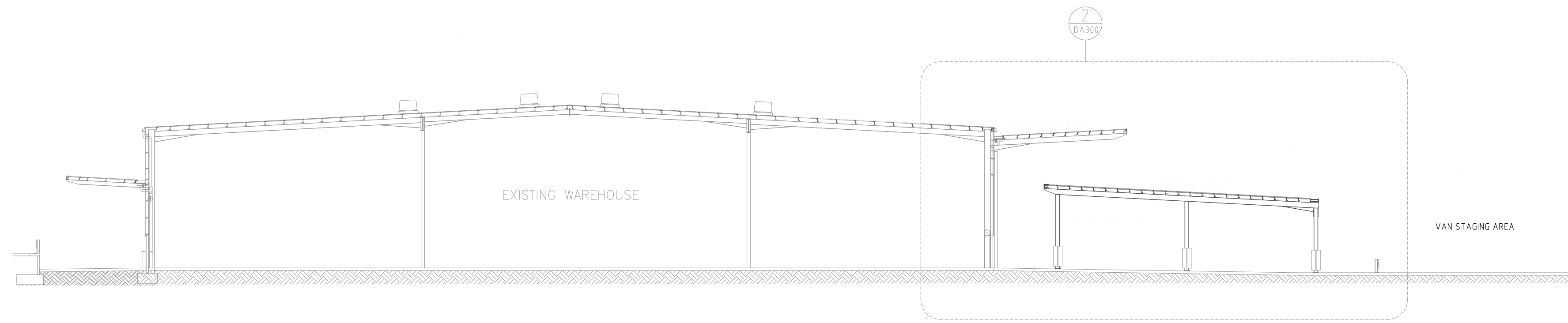
1 GROUND FLOOR PLAN 1: 100 @ A1



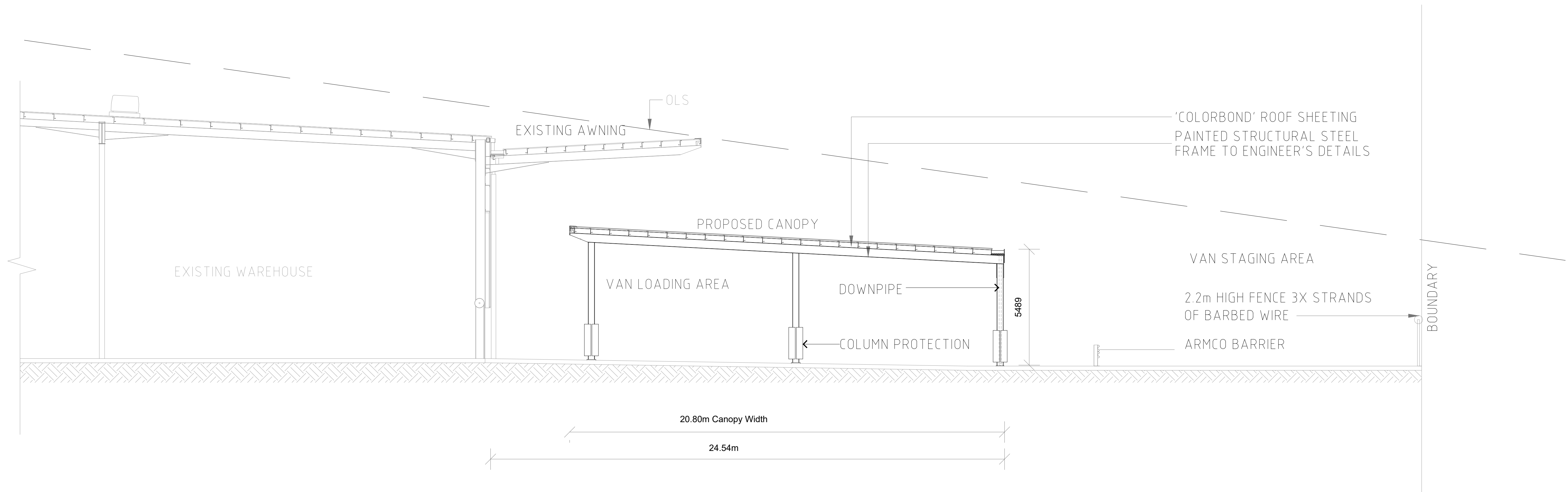
2 FIRST FLOOR PLAN 1: 100 @ A1

LEGEND

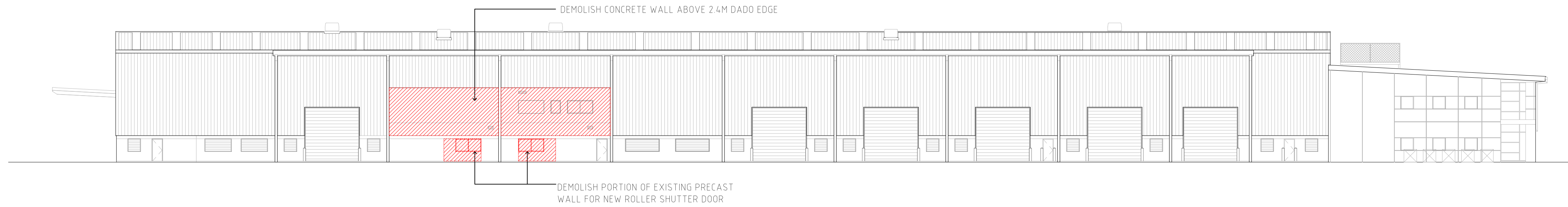
- TO BE DEMOLISHED
- PROPOSED
- INACTIVE / NOT USED
- DP DOWNPIPE



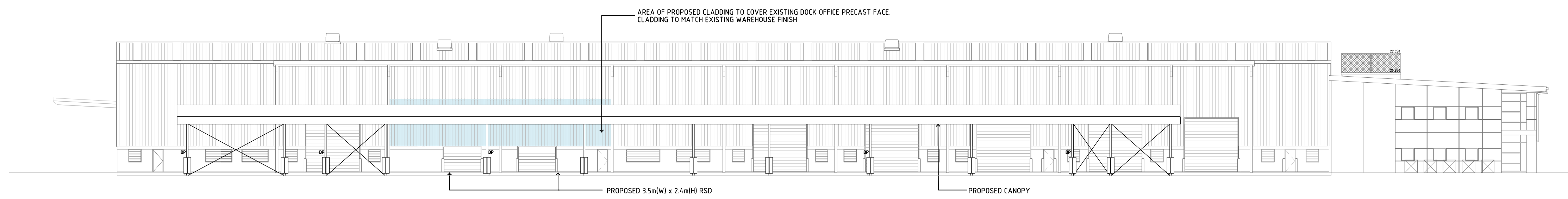
1 PROPOSED CANOPY SECTION 1: 250 @ A1






2 ENLARGED CANOPY SECTION 1 : 100 @ A1

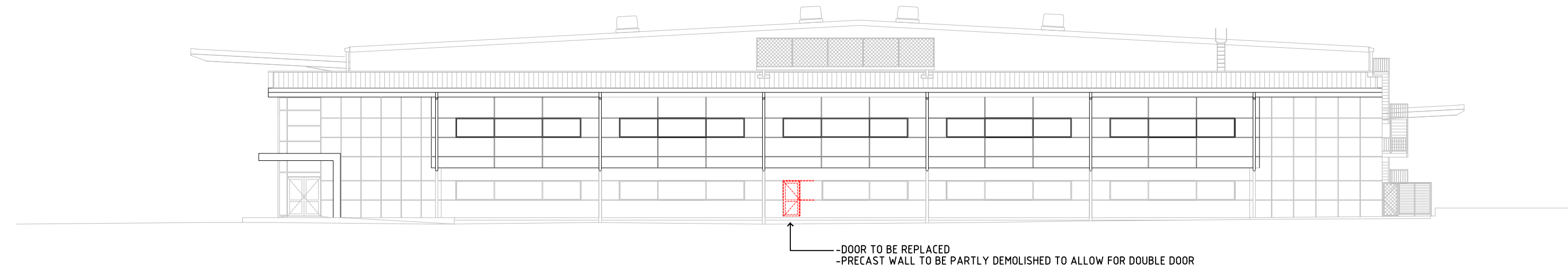


1 EXISTING SOUTH WEST ELEVATION : 250 @ A1

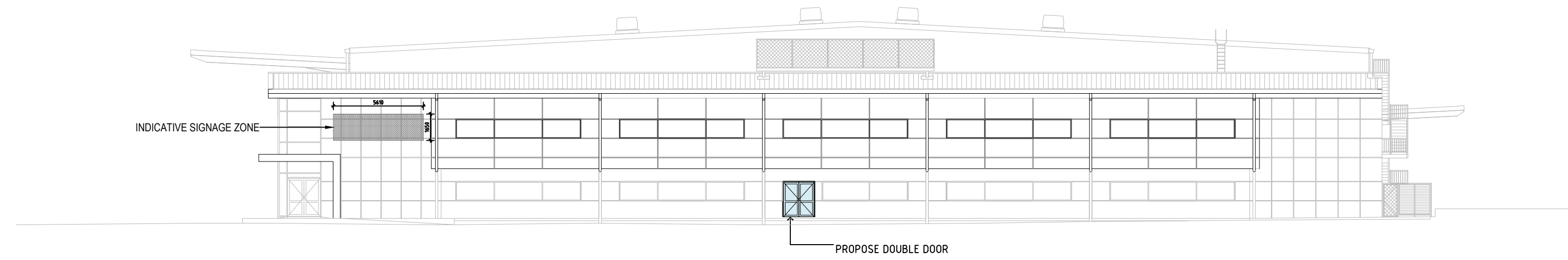


2 PROPOSED SOUTHWEST ELEVATION : 250 @ A1





| LEGEND | |
|---|---------------------|
|  | TO BE DEMOLISHED |
|  | PROPOSED |
|  | INACTIVE / NOT USED |
| DP | DOWNPIPE |

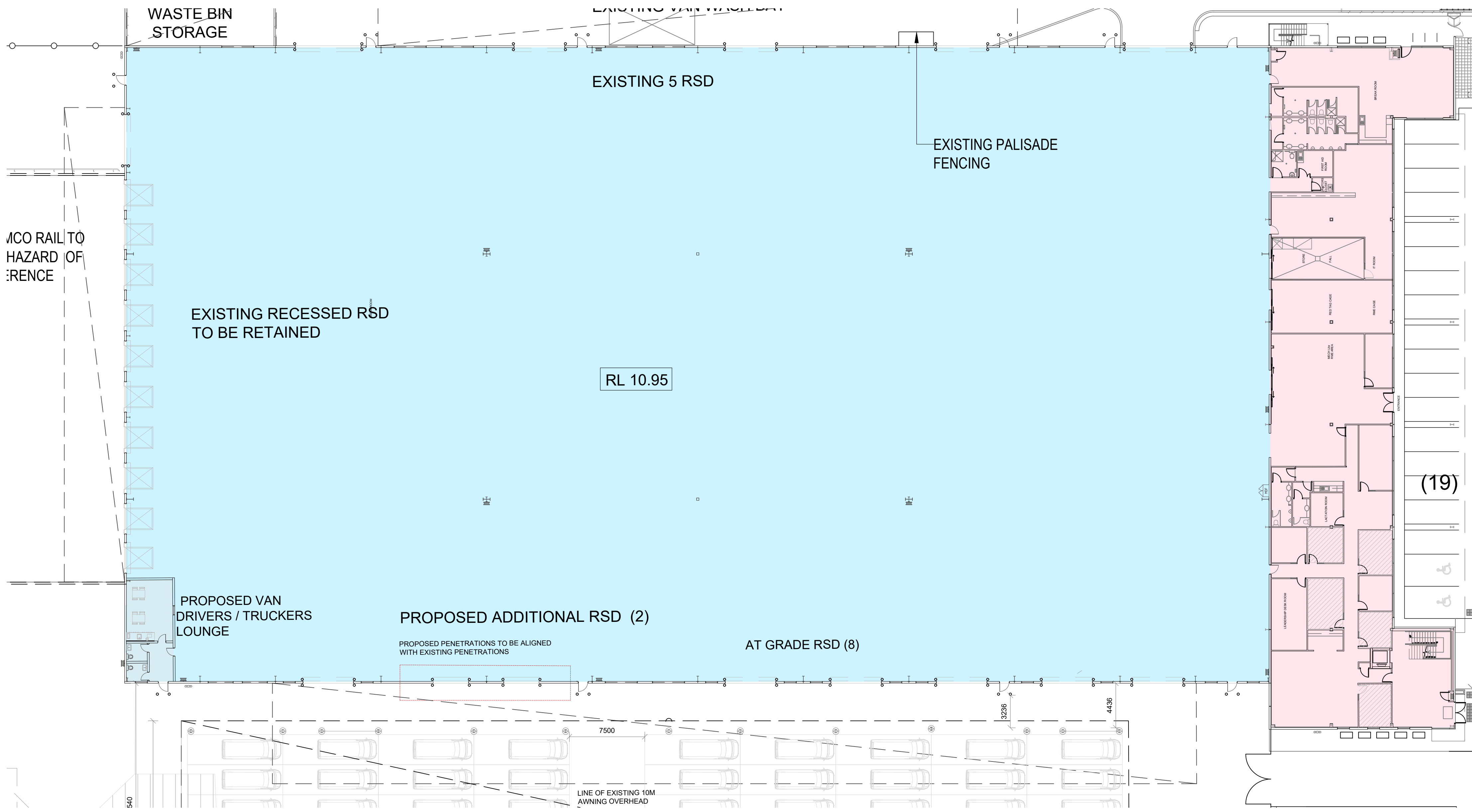


1 EXISTING SOUTH EAST ELEVATION B : 250 @ A1



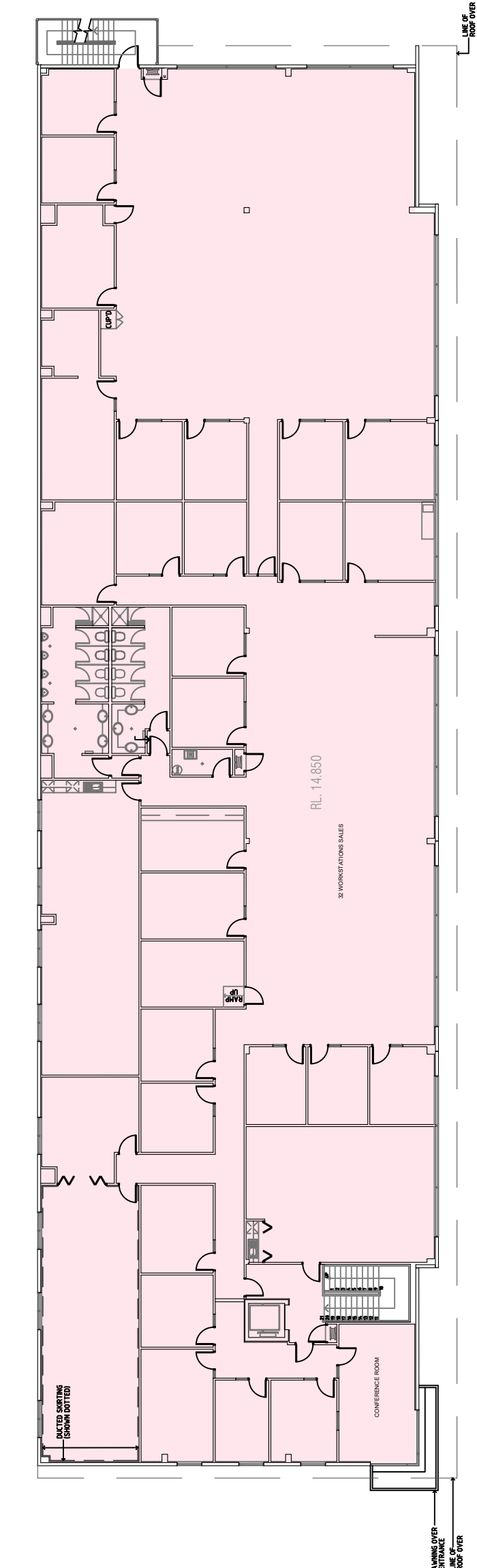
2 PROPOSED SOUTH EAST ELEVATION B : 250 @ A1

| LEGEND | |
|---|---------------------|
|  | TO BE DEMOLISHED |
|  | PROPOSED |
|  | INACTIVE / NOT USED |
|  | DOWNPIPE |



GROUND FLOOR GFA : 250 @ A1

1



LEVEL 01 GFA : 250 @ A1

2

| GFA Calculation | |
|---------------------|----------------------------|
| AREA TYPE | m ² |
| Warehouse | 7,172 m ² |
| Office Ground Floor | 927 m ² |
| Office First Floor | 1,258 m ² |
| Total GFA | 9,357 m² |

| Parking Rates | | | |
|-------------------------|----------------------|---------------------------------|------------------|
| AREA TYPE (Total) | m ² | Parking Rates | Parking Required |
| Warehouse | 7,172 m ² | 1 carspace per 60m ² | 120 |
| Office | 2,185m ² | 1 carspace per 40m ² | 55 |
| Total Car Spaces | | | 175 |
| Proposed Spaces | | | 158 |

DEFINITION

gross floor area means the sum of the floor area of each floor of a building measured from the internal face of external walls, or from the internal face of walls separating the building from any other building, measured at a height of 1.4 metres above the floor, and **includes--**

- (a) the area of a mezzanine, and
- (b) habitable rooms in a basement or an attic, and
- (c) any shop, auditorium, cinema, and the like, in a basement or attic,

but **excludes--**

- (d) any area for common vertical circulation, such as lifts and stairs, and
- (e) any basement--
 - (i) storage, and
 - (ii) vehicular access, loading areas, garbage and services, and
- (f) plant rooms, lift towers and other areas used exclusively for mechanical services or ducting, and
- (g) car parking to meet any requirements of the consent authority (including access to that car parking), and
- (h) any space used for the loading or unloading of goods (including access to it), and
- (i) terraces and balconies with outer walls less than 1.4 metres high, and
- (j) voids above a floor at the level of a storey or storey above.