

# **BANKSTOWN AIRPORT**

## **Community Aviation Consultation Group**

**1 September 2021**

Premier General Aviation Airport and  
Major Commercial Centre in Sydney

[sydneymetroairports.com.au](https://sydneymetroairports.com.au)



# Agenda

- Attendees and apologies
- CACG chair and membership
- Minutes of prior meeting
- SMA Airport – Community briefing
- DITRDC – Community briefing
- Airservices Australia – Community briefing

Premier General Aviation Airport and  
Major Commercial Centre in Sydney

[sydneymetroairports.com.au](http://sydneymetroairports.com.au)

# **Sydney Metro Airports Community Briefing**

- Aviation**
- Property and Infrastructure**
- Operational**



# Aviation – Aircraft Movements and Noise

- CY2021 (1 Jan to 16 Aug): **XXX,XXX** movements
  - CY2021 (1 Jan to 31 May): 100,360 movements
  - CY2021 (1 Jul to 16 Aug): 12,421 movements (daily average: 264 movements | 2019 **PCP**: 742 movements)
  - CY2020: 229,942 movements
  - CY2019: 270,864 movements
- COVID restrictions - impacts on aircraft movements
  - From **[date]**: Flying permitted for essential education and work that cannot be conducted at home – allowing for pilot training to continue.
  - From 23 August 2021: Restrictions amended for 12 LGAs of Concern (including Bankstown) to “All exams and other education or professional development related activities will move online, not including the HSC”. **[relevance?]**

# Aviation – Noise Complaints

- CY2021 (1 Jan to 31 Jul): 194 complainants through Airservices Australia (CY2020 PCP: 159)
- **64** complaints received since the previous CACG report in March 2021
  - May: 14 complaints | Jun: 12 | Jul: 49
  - 43 of the 49 complaints in Jul relating to emergency services operations during night hours, and 1 related to circuit training
  - Significant complaints relating to helicopter operations - Activity associated with bush fire operations and Ausgrid's review of power lines.
- 4 complaints received through Crime Stoppers as aircraft were observed flying prior to **22 (23?)** August
  - All confirmed to be pilot training in accordance with NSW Health Orders
- Complaints from the local community to NSW Police relating to POLAIR helicopters

Bespoke General Practice and Health Services for South West Growth Centre of Sydney. A Bespoke Commercial and Employment Hub

## Noise Complaints

[sydneymetroairports.com.au](http://sydneymetroairports.com.au)

- Of the 49 complaints in July, 1 complainant also concerned with how the airports ANEF contours were

# Aviation – Aircraft Movements and Noise

## Aircraft Movements

Bespoke General and Recreational Airport  
for South West Growth Centre of Sydney.  
A Bespoke Commercial and Employment Hub  
for the Camden Region.

[sydneymetroairports.com.au](http://sydneymetroairports.com.au)

<sup>1</sup> SMA is responsible for noise produced from aircraft on the ground. SMA works with Airservices to review complaints from residents regarding airborne aircraft.

<sup>2</sup> Bankstown Airport Master Plan 2019 forecast traffic movements of circa 280,000 for CY2021.

# Western Sydney Airport - Update

A new fact sheet has been released by the Federal Government.

*Flight paths for Western Sydney International* was distributed to our stakeholders in order to keep them informed about the next stages of consultation.

Additional information is available at: <https://www.westernsydneyairport.gov.au/about/flight-paths>



**Australian Government**  
Department of Infrastructure, Transport, Regional Development and Communications

**WESTERN SYDNEY**  
Fact Sheet

## Flight paths for Western Sydney International

**June 2021**

The process for developing Western Sydney International (Nancy-Bird Walton) Airport's flight paths is well underway and is on track for the airport's scheduled opening in 2026.

The Sydney Basin is home to a number of existing airports including Sydney (Kingsford Smith) Airport – Australia's busiest airport, Bankstown Airport and Richmond Air Force Base. Designing flight paths for Western Sydney International is a large and complex task that will take several years to complete. This includes community consultation and feedback at the preliminary design phase.

The process for designing flight paths and airspace management for the airport will follow international best-practice approaches to optimise a balance of safety, technical efficiency, capacity and noise and environmental conditions. The flight paths design process will cover four main phases (see over page):

- Planning – **Completed**
- Preliminary design and environmental assessment – **Ongoing**
- Detailed design
- Implementation

**Who will design flight paths?**

The Department of Infrastructure, Transport, Regional Development and Communications (the Department) is working closely with the national air navigation service provider, Airservices Australia, to develop the flight paths and airspace arrangements for the new airport. This includes completing the environmental assessment process.

An Expert Steering Group is overseeing the design process for the airport's flight paths, and compliance with the conditions and provisions of the Western Sydney Airport Plan. This group is led by the Department and includes representatives from industry and regulatory bodies, Airservices Australia, Civil Aviation Safety Authority (CASA) and the Chair of the Forum on Western Sydney Airport (FOWSA).

### Key design principles

Airspace design in Australia generally starts with developing proof-of-concept flight paths. This first step was completed for Western Sydney Airport through developing indicative flight paths for the draft Environmental Impact Statement in 2015.



Significant changes were made to the approach to flight path design as a result of feedback received from the community on the indicative flight paths. The Airport Plan now includes 12 design principles that require the development of flight paths to minimise the impact on the community and the environment, while maximising the benefit of the airport. These principles include:

- Safety is non-negotiable.
- Flights over residential areas and noise-sensitive facilities will be avoided as much as possible.
- Where flight paths are unable to avoid residential areas:
  - Where possible, these areas should not be overflown by both arriving and departing aircraft.
  - Noise abatement procedures should be optimised to ensure that residents are impacted as little as possible.
- Procedures will be developed to minimise the impact of night time aircraft operations on the community while not constraining airport operations.
- Aircraft arrivals will not converge through a single merge point over any single residential area.
- Airspace design will consider the impacts of air operations on natural and visually sensitive areas.
- The community, aerodrome operators and airspace users will be consulted in determining the final flight paths.

### Engaging the community in the flight path design process

Community engagement will be ongoing throughout construction of the new airport and design of the flight paths and airspace.

The preliminary design phase is currently underway, and the proposed design will be open for public consultation as part of the upcoming environmental assessment process.

FOWSA, a community and stakeholder reference group, has been established to consult and inform the community. FOWSA's role is to ensure that the community remains informed about key milestones in the airport's development and that the community's views are heard during the construction period.

### Finalising Flight Paths

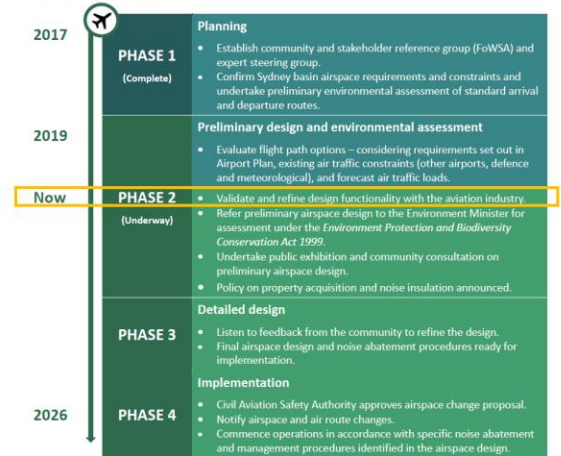
Once complete, the preliminary flight path design will be subject to an environmental assessment under the *Environment Protection and Biodiversity Conservation Act 1999*.

Community consultation will be undertaken including public exhibitions of the flight paths, community presentations, and the opportunity to provide feedback on the proposed design. The feedback is part of the environmental assessment and will be closely considered before moving to the detailed design phase.

There are a number of checks and balances during this process in order to ensure that the design is safe and robust, and does not unduly impact the community and the environment.

Once the environmental assessment and community consultation process is complete, Airservices Australia will prepare the airspace change proposal for final approval by CASA.

### Flight path design pathway



For more information visit [www.westernsydneyairport.gov.au](http://www.westernsydneyairport.gov.au)

Bespoke General and Recreational Airport for South West Growth Centre of Sydney. A Bespoke Commercial and Employment Hub for the Camden Region.

[sydneymetroairports.com.au](http://sydneymetroairports.com.au)



BANKSTOWN & CAMDEN

# JAPAT – Joint Airspace Procedures Advisory Team

- Airservices and CASA conducted a joint airspace review in 2017
- JAPAT Team reviewed the airspace associated with Bankstown Airport and risks to aircraft safety.
- SMA currently facilitating meetings with the aviation industry, CASA and Airservices to assist finalising the JAPAT Report recommendations.
- These recommendations included expanding the Bankstown Control Zone to the west (4.2NM), segregated VFR and IFR routes and Class E airspace to the west of Bankstown.
- Report recommendations are now being considered in regards to the Western Sydney Airport airspace requirements.
- SMA will report back to the BACACG regarding the outcomes of future meetings.



## JAPAT 2016 – Final Report

CASA/Airservices (Bankstown) Joint Airspace & Procedures Analysis (JAPAT)



© Airservices Australia 2016

1

Bespoke General and Recreational Airport  
for South West Growth Centre of Sydney.  
A Bespoke Commercial and Employment Hub  
for the Camden Region.

[sydneymetroairports.com.au](http://sydneymetroairports.com.au)



# Property and Infrastructure

Chris Callcott, GM Property



# Covid-19 Impacts Update

Tenants applying for rent relief

SMA Covid -19 Governance Committee

Rent relief to be applied in accordance with NSW State Government regulations.

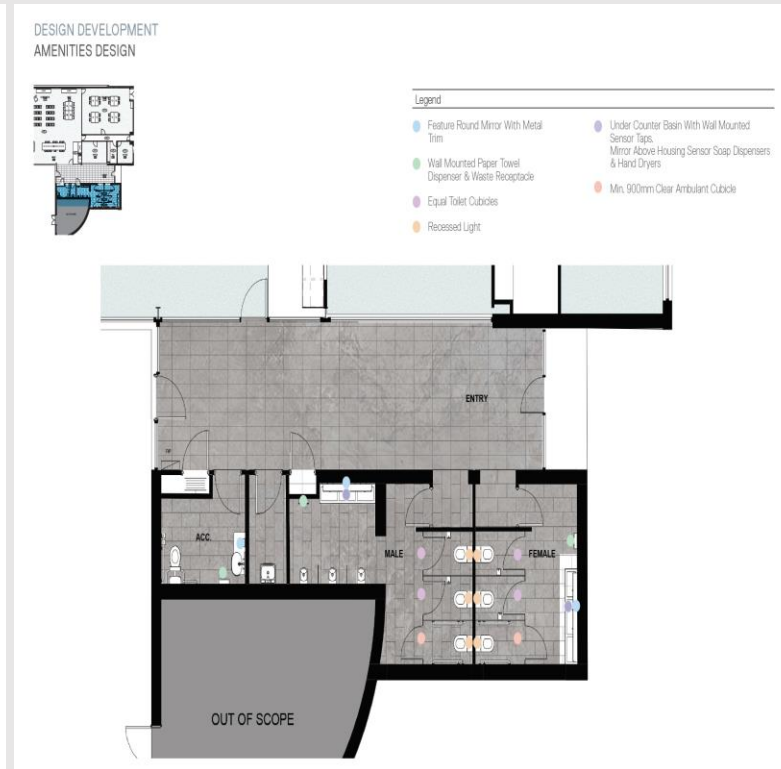
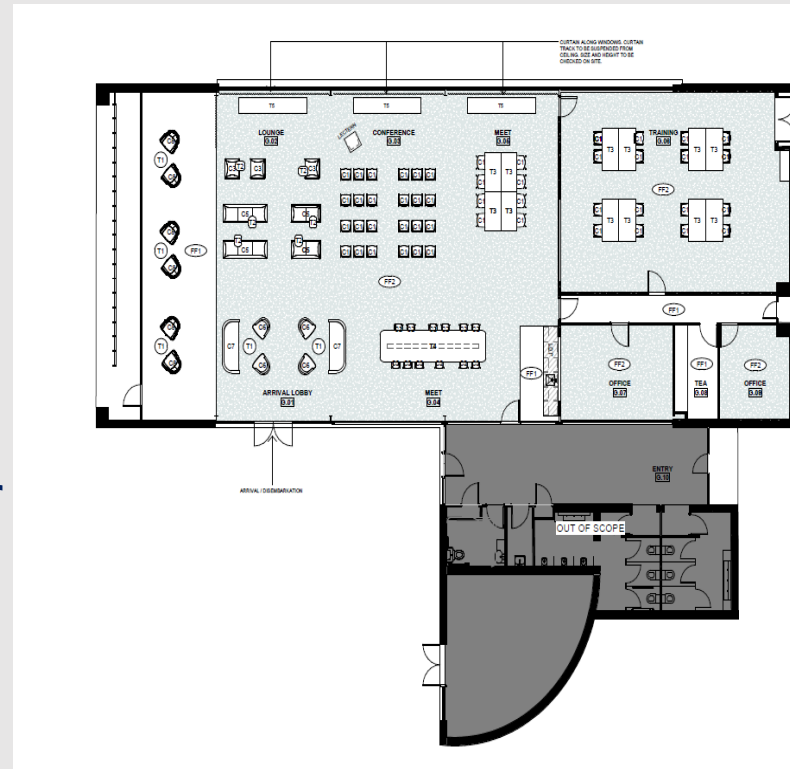


Premier General Aviation Airport and  
Major Commercial Centre in Sydney

[sydneymetroairports.com.au](https://sydneymetroairports.com.au)

# Terminal Refurbishment

- WMK Architects
- Amenities, lounge & furniture
- Design completed
- ABC application September
- Tender October
- Construction November

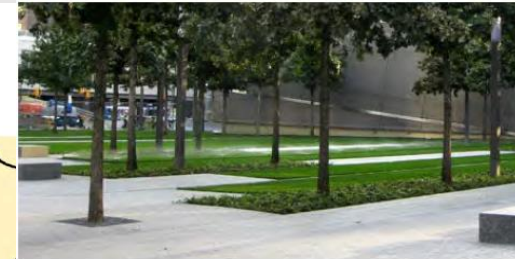
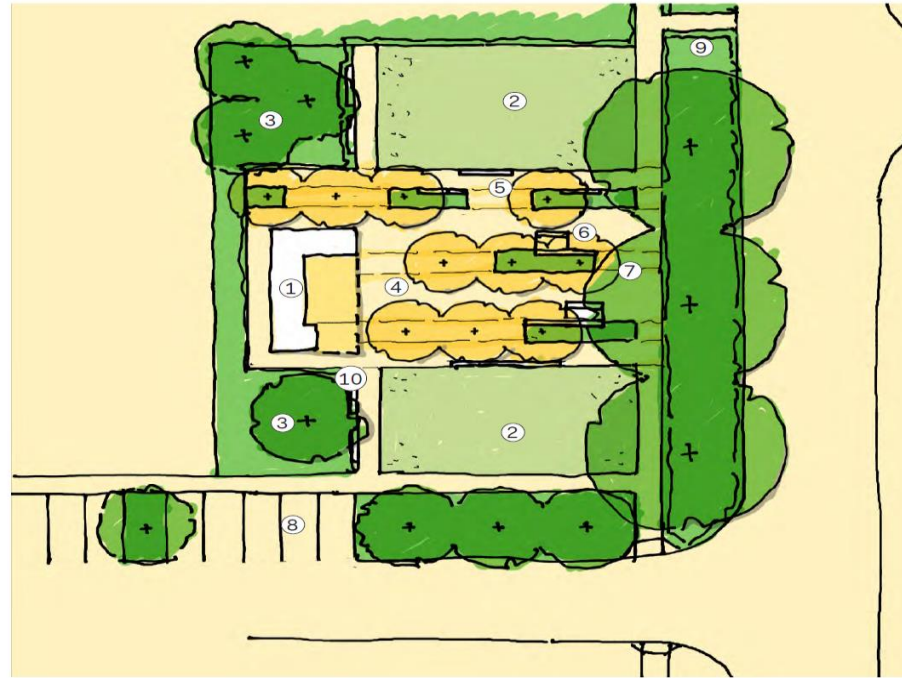


Premier General Aviation Airport and  
Major Commercial Centre in Sydney  
[sydnymetroairports.com.au](http://sydnymetroairports.com.au)

# Landscaping Signage Cafe

- Diadem (Signage & Wayfinding Arch) – Engaged
- Design Completed
- Stage 1 installation FY22
- Oculus (Landscape Architects) - Engaged
- Landscape Masterplan Development
- Stage 1 FY22 - Marion Street Entry Statement & Airport Drive
- Cafe

**Stage 1A**  
Cafe area concept



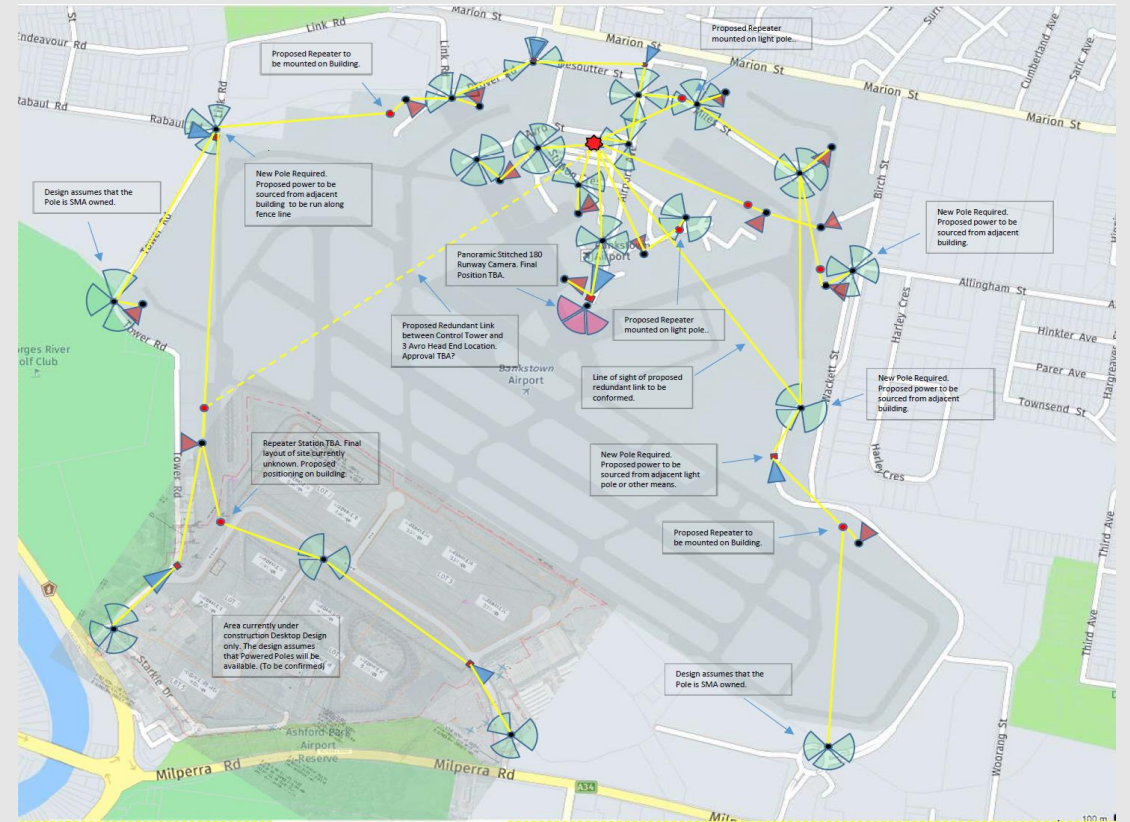
Premier General Aviation Airport and  
Major Commercial Centre in Sydney

[sydneymetroairports.com.au](http://sydneymetroairports.com.au)



# Security Camera Installation

- Stage 1 - 16 cameras installed airside & landside
- Stage 2 - Entertainment Park precinct FY22
- Day / night & number plate recognition
- Wireless & fixed



Premier General Aviation Airport and  
Major Commercial Centre in Sydney  
[sydneymetroairports.com.au](http://sydneymetroairports.com.au)

# FY22 Capex Projects

- 5 major capex projects
- 510/521 Hangar refurbishment
- Hangar 542 refurbishment
- Building F 533 refurbishment
- Airmed refurbishment
- Quickstep

## 430 Marion Street

- 26 minor capex projects
- Tenancy refurbishments
- Electrical upgrades
- Airconditioning upgrades
- Fire services upgrades

## Altitude Industrial Warehouses

Irrigation & fencing upgrades

Civil works including carpark upgrades

Storm water upgrades

Premier General Aviation Airport and  
Major Commercial Centre in Sydney

[sydneymetroairports.com.au](http://sydneymetroairports.com.au)

# 430 Marion Street

- Design considerations:
  - Full height precast concrete warehouse noise to Marion Street
  - Minimum 15m setback from the roads
  - Incremental traffic impacts assessed as minor through traffic modelling



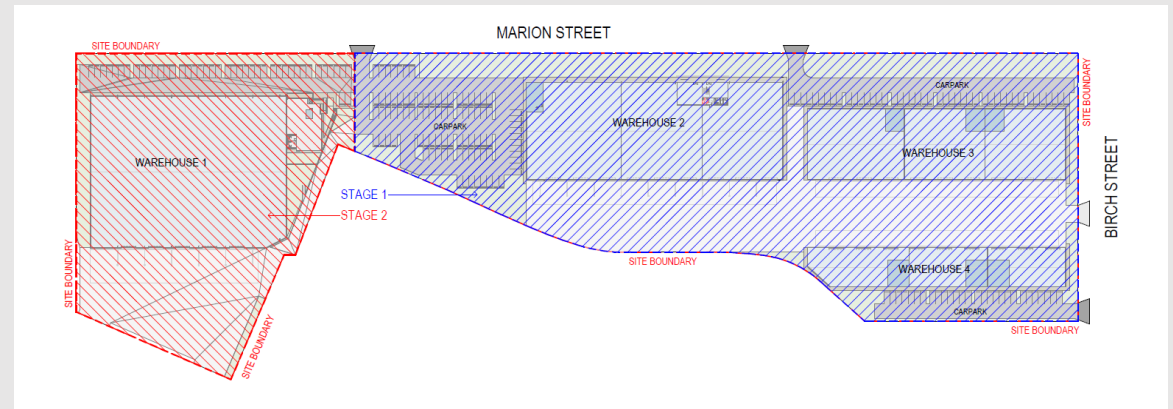
Premier General Aviation Airport and  
Major Commercial Centre in Sydney

[sydneymetroairports.com.au](http://sydneymetroairports.com.au)



# 430 Marion Street Consultation

- A two-week formal public consultation and exhibition period was undertaken for 430 Marion Street in June.
- SMA held meetings with directly impacted aviation tenants and outlined potential changes and impacts to the airport.
- Notifications were distributed to more than 150 neighbours in close proximity to the site and further information was provided for all stakeholders on the SMA website.
- No community enquiries were received.



Premier General Aviation Airport and  
Major Commercial Centre in Sydney

[sydneymetroairports.com.au](http://sydneymetroairports.com.au)

  
SYDNEY METRO AIRPORTS

BANKSTOWN & CAMDEN



# Northern Precinct Café and Upgrades

- New café planned on corner of Airport Avenue and Marion Street
- Opportunity for entry statement, landscaping and new airport signage
- Bulk earthworks design and investigations underway
- Community consultation following concept designs in 1H CY2021
- Anticipate operational this CY2021



Premier General Aviation Airport and  
Major Commercial Centre in Sydney

[sydneymetroairports.com.au](http://sydneymetroairports.com.au)

# Altitude Industrial – Warehouses 3 & 4

- Premium Grade Logistics Park - Altitude
- 162,000sqm, Workforce c850 staff
- 5 Star green rating, 1.9MW solar gen.
- Aviation assessments undertaken for each new warehouse (windshear, turbulence and reflectivity)



Premier General Aviation Airport and  
Major Commercial Centre in Sydney  
[sydnymetroairports.com.au](http://sydnymetroairports.com.au)

- Completed
- Commenced
- Pipeline

# Infrastructure

Chris Callcott, GM Property



# Tower Road upgrade



- Tower Rd 1.7km – poor condition, pinch points, ageing infrastructure, no amenity
- Intended upgrades being planned including discussions with key stakeholders (Council, TfNSW, GR Golf Course)
- Potential road widening (6m to 7m)
- Intended introduction of footpaths / cycleways
- Staged implementation anticipated 2021+
- Meetings with directly impacted tenants has commenced to discuss design and potential changes to their tenancy footprint

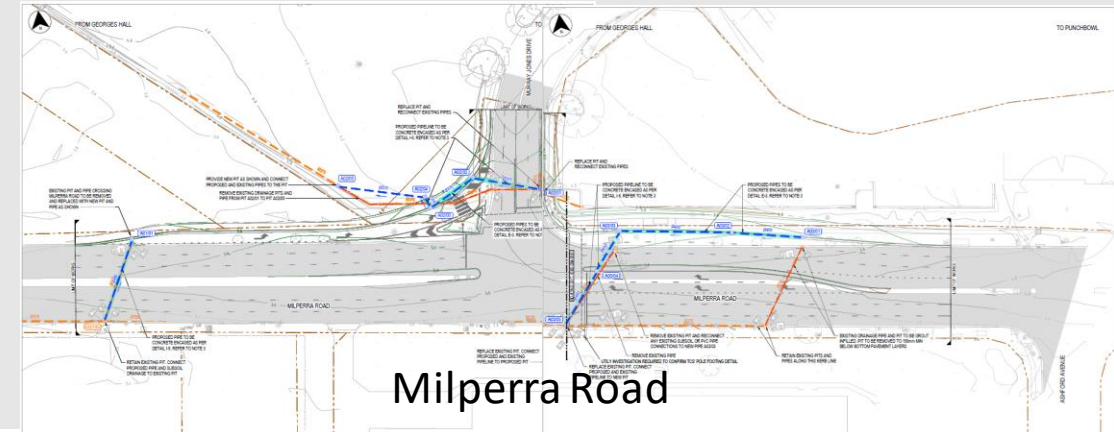
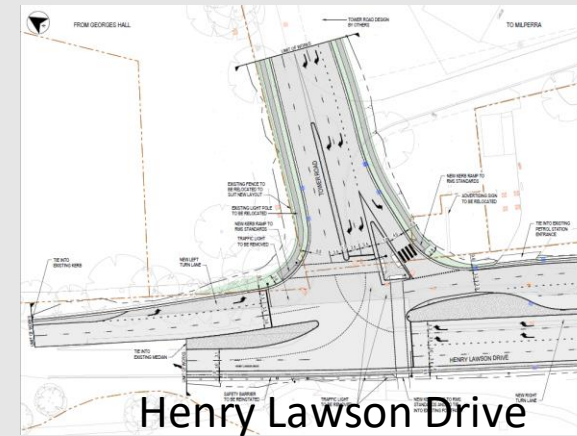
Bespoke General and Recreational Airport for South West Growth Centre of Sydney. A Bespoke Commercial and Employment Hub for the Camden Region.

[sydneymetroairports.com.au](http://sydneymetroairports.com.au)



# Intersection Upgrades – Tower Rd and MJD

- Ongoing consultation with TfNSW to finalise design of intersection upgrades
  - Henry Lawson Drive Design: 50% design
  - Murray Jones Drive is at 85%
- Construction anticipated to take 4-6 months per intersection
- Traffic impacts during construction to ease following completion
- Works to compliment TfNSW planned upgrades for Henry Lawson Drive for M5 to Tower Road (\$100M committed)



Bespoke General and Recreational Airport for South West Growth Centre of Sydney. A Bespoke Commercial and Employment Hub for the Camden Region.

[sydnymetroairports.com.au](http://sydnymetroairports.com.au)

# Aviation Infrastructure & Operations

## Airfield Ground Lighting (AGL) Upgrade

- Commissioning expected to occur in mid September 2021 (COVID restrictions pending)



Bespoke General and Recreational Airport  
for South West Growth Centre of Sydney.  
A Bespoke Commercial and Employment Hub  
for the Camden Region.

[sydneymetroairports.com.au](https://sydneymetroairports.com.au)

# Aviation Infrastructure & Operations

- Airfield works:
  - Taxiway line paint refresh conducted in July.
  - All runway markings also repainted in July.
- Airside Pavement:
  - Taxiway Kilo re-sheet to be completed by August.
  - Taxiway Alpha and Taxiway Papa re-sheets to be completed in FY22



Bespoke General and Recreational Airport  
for South West Growth Centre of Sydney.  
A Bespoke Commercial and Employment Hub  
for the Camden Region.

[sydneymetroairports.com.au](https://sydneymetroairports.com.au)

# Environmental, Social, and Governance

Daniel Jarosch, CEO





# ESG Strategy

- SMA is developing an ESG Strategy
- Draft framework to include:
  - Climate Risk
  - Energy Consumption
  - Aviation Safety
  - Health, Safety and Wellbeing
  - Customer and Community Engagement
  - Diversity and Inclusion
  - Incident and Crisis Management
  - Environmental Compliance
  - Environmental Incidents



Premier General Aviation Airport and  
Major Commercial Centre in Sydney

[sydneymetroairports.com.au](https://sydneymetroairports.com.au)

# Per and Poly-Fluoroalkyl Substances (PFAS)

## What has happened since our last meeting?

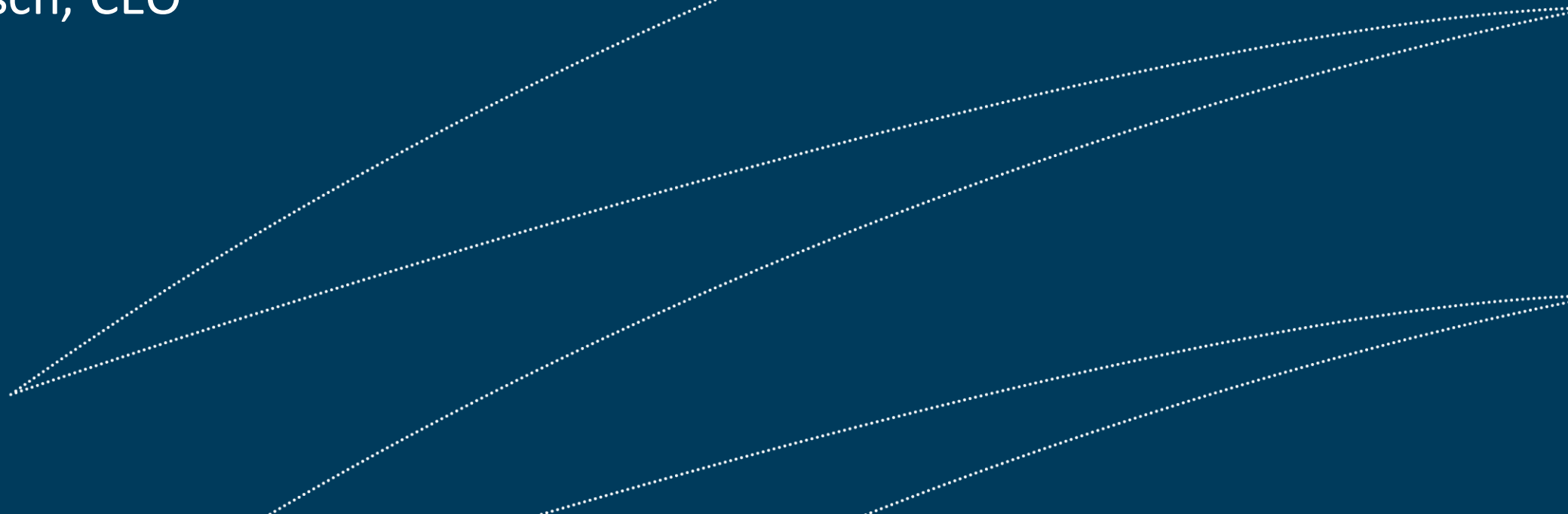
- The Department has announced a \$130 Million PFAS Investigation Program over the next 3 years
- SMA has submitted an expression of interest to participate in the Pilot investigation program as we are mature in our understanding of PFAS at Bankstown Airport
- We have engaged EnRisks to conduct the annual review of our Human Health and Ecological Risk Assessment
- One reported elevation in groundwater reported in our December monitoring. We have resampled this well and found that this was not an anomalous sample.
- Due to the slow moving nature of groundwater in clay soils (m/year) and dilution over distance, this localised PFAS elevation is not of concern. We will continue to monitor.

Premier General Aviation Airport and  
Major Commercial Centre in Sydney

[sydneymetroairports.com.au](http://sydneymetroairports.com.au)

# Corporate Services

Daniel Jarosch, CEO



# Ex Gratia Land Tax (EGLT)

What has happened since our last meeting?

- Department has issued valuation methodology guidelines for assessment of single title land value (Aug 2021)
- Department has reiterated timeframe for new framework despite SMA's request for extension to allow appropriate communication of changes to tenants (Framework completed Jan 22, Submission due Mar 22)

What is going to happen?

- Single title valuations to be completed and provided to the Department by Dec 21
- Transitional arrangements to be negotiated with Department by Nov 21
- Arrangements to be agreed and contracted between Airports and Department by Jan 22
- Submission of EGLT Liability due Mar 22
- Payment of EGLT Liability due Apr 22

Premier General Aviation Airport and  
Major Commercial Centre in Sydney

[sydneymetroairports.com.au](http://sydneymetroairports.com.au)

# Invoicing

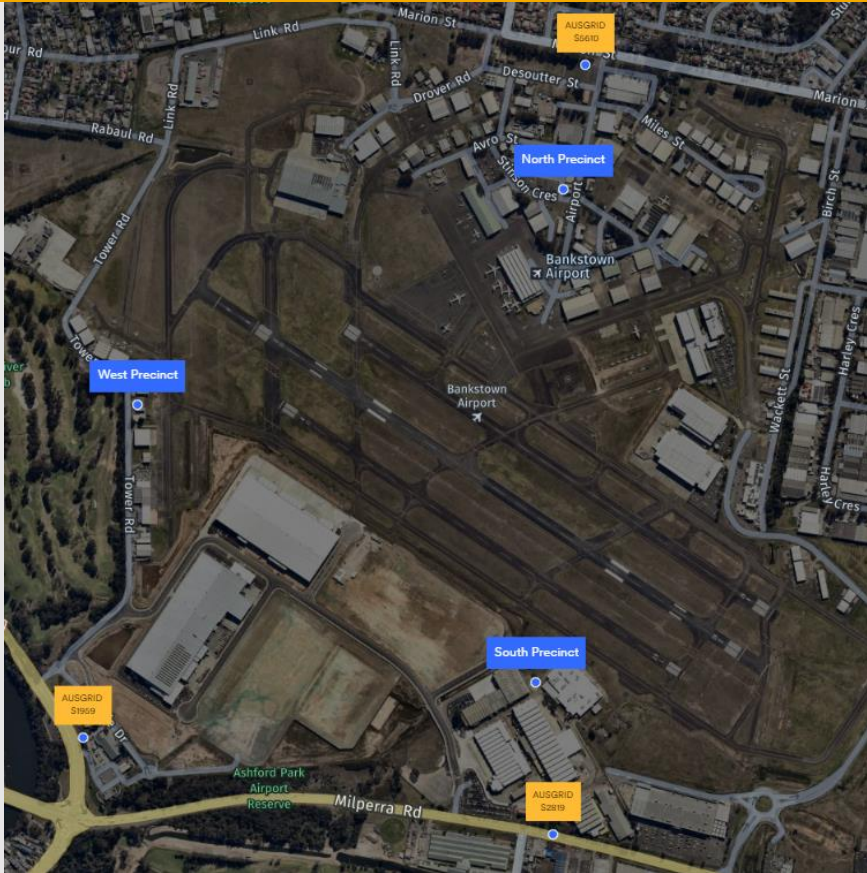
- JLL used for generation of Property and Aviation Invoices for SMA from April 2021
- Property Invoices currently well received (welcome feedback)
- Feedback on Aviation Invoice not as positive. Generally around the following:
  - Difficult to reconcile charges per aircraft if own multiple aircraft (currently done by date of charge incurred)
  - Invoice too long due to number of movements on one page (currently 6-10)
- SMA is working with JLL to rectify these issues and hope for a resolution by October 2021

Premier General Aviation Airport and  
Major Commercial Centre in Sydney

[sydnymetroairports.com.au](http://sydnymetroairports.com.au)



# SMA Utilites - Roll Out Update



- SMA completed a review of the ENS in FY 21
- FY 22 Investments recommended:
  - Improved & compliant electronic billing system
  - Smart Meters to all tenants by end Sept 21.
  - A 5 year rolling High Voltage capital, repairs & maintenance programs.
  - New precinct wide SOLAR systems to be incorporated into the network.
  - Works to commence in early 2022 in the North, West & South Precincts.

Premier General Aviation Airport and  
Major Commercial Centre in Sydney

[sydneymetroairports.com.au](http://sydneymetroairports.com.au)

# Vision, Values and Brand

- SMA continues to progress the roll out of its new vision, mission, values and brand
- Staged and delivery of the physical site elements
- Proposed launch of the new brand is likely to occur 2H 2022
- We are defining our target in terms of the new brand launch in the context of placemaking, wayfinding, signage and landscaping.

Premier General Aviation Airport and  
Major Commercial Centre in Sydney

[sydneymetroairports.com.au](https://sydneymetroairports.com.au)



BANKSTOWN & CAMDEN



**Australian Government**

**Department of Infrastructure, Transport, Regional Development and Communications**

# Bankstown Airport Community Aviation Consultation Group September 2021

Department Update





Australian Government

Department of Infrastructure, Transport,  
Regional Development and Communications

## Five Year Plan on Aviation

- Noting the continued impact of COVID-19, the Australian Government will be providing an update to the sector in Quarter 4 2021.



# Extension of Australian Government COVID-19 Support

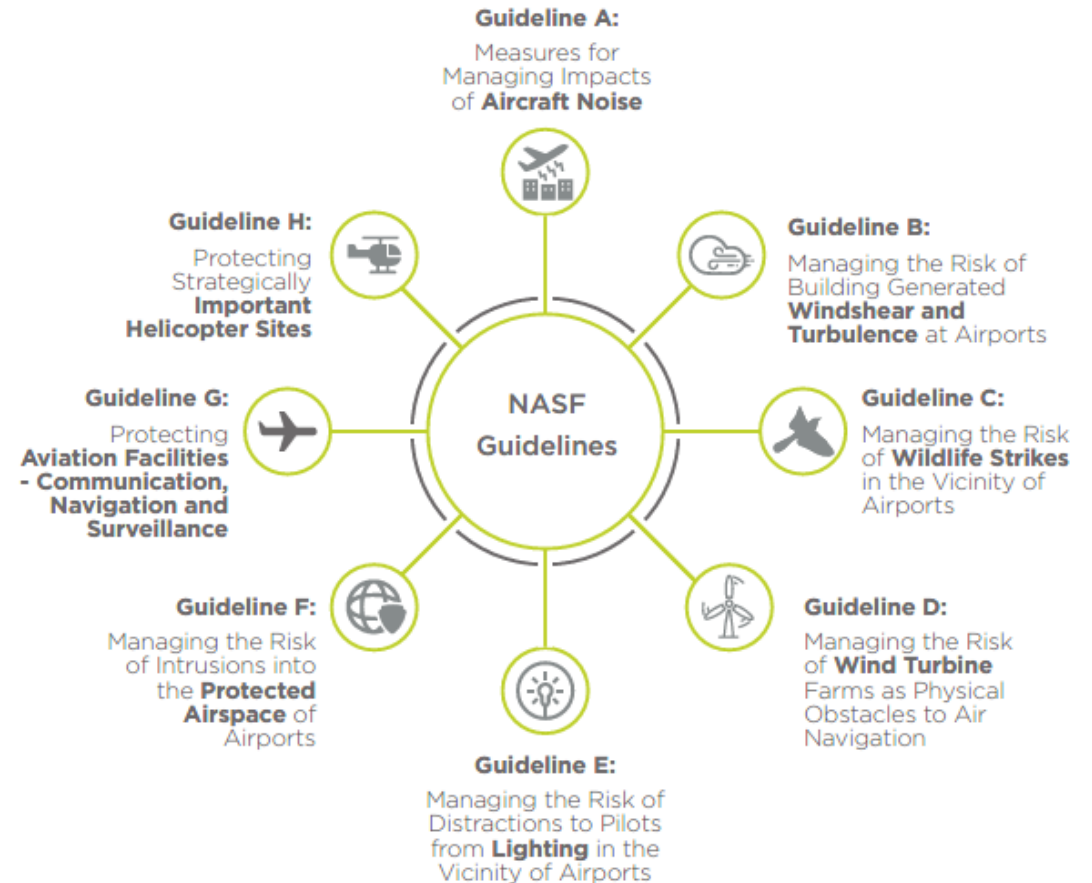
- Domestic Aviation Network Support (DANS) and the Regional Airline Network Support (RANS) programs extended until 31 December 2021.
- Airservices Australia fee waiver extended until 31 December 2021.
- Domestic Airports Security Costs Support extended until 31 December 2021.
- Tourism Aviation Network Support program extended until 30 November 2021.
- Aviation Services Accreditation Support extended until 31 December 2021.
- A new Retaining Domestic Airline Capability (RDAC) program to assist airlines maintain core sovereign domestic airline capabilities through the retention of essential aviation sector skills and knowledge, which will run until 31 December 2021.

The Government has provided the aviation sector with more than **\$4.9 billion** in assistance so far.

# National Airports Safeguarding Group

- Meeting held on 13 July 2021.
- Discussed draft Recommendations from the Implementation Review of the National Airports Safeguarding Framework guidelines (NASF).
- Proposed measures to be provided to Federal and State Transport Ministers by end of 2021.
- Next meeting – Nov 2021.

Email [safeguarding@infrastructure.gov.au](mailto:safeguarding@infrastructure.gov.au)



# Regulation Sunsetting

- The outcomes of previous consultation will be used to inform options presented for stakeholder feedback.
- The work will be staged thematically over the coming three years, with an initial focus on cutting red tape, duplication and inconsistency in reporting requirements.
- Stage 1 issues paper to be circulated to stakeholders for comment before the end of 2021.
  - Stage 1 internal airport operations.
- Later stages subject to consultation throughout 2022.
  - Stage 2 streamlining Commonwealth responsibilities for the control of on-airport activities.
  - Stage 3 increasing flexibility & modernising environmental, building control and airspace frameworks.
  - Stage 4 progressing legislative reforms to the Airports Act.
- CACGs consulted as part of Stage 3 consultation (encompassing building control, environment protection and protection of airspace) and Stage 4 amendments to the Airports Act and Major Development Plan triggers.

# Ongoing Aviation Considerations

## Ex-Gratia Land Tax (EGLT)

- Development of a new EGLT framework is continuing, with a focus on investigating the valuations used in calculating EGLT on airport land. A set of valuation rules for airports to use in EGLT assessments was released to airports on 6 August 2021.
- Airports may seek their own valuation expertise in conducting valuations specific to their airport sites. The Department is seeking feedback from airports in early October. Aiming for finalisation of new EGLT framework arrangements with individual airports before March 2022, when the next EGLT assessments are due.
- The Department welcomes ongoing engagement from all airports.

## Major Development Plan Thresholds

- The instrument will be available on the Department's website, along with some summary information of the rationale behind the increase.
- Further information may be obtained from: [aviationreform@infrastructure.gov.au](mailto:aviationreform@infrastructure.gov.au).



Any questions?



1 September 2021

AIRSERVICES UPDATE

# BANKSTOWN CACG

James Eason - Tower Operations

Tim Gill - Community Engagement Senior Advisor

# AIRSERVICES UPDATE

- Tower & Operational Update
- NCIS Complaints – Q2, 2021
- CACG Representation

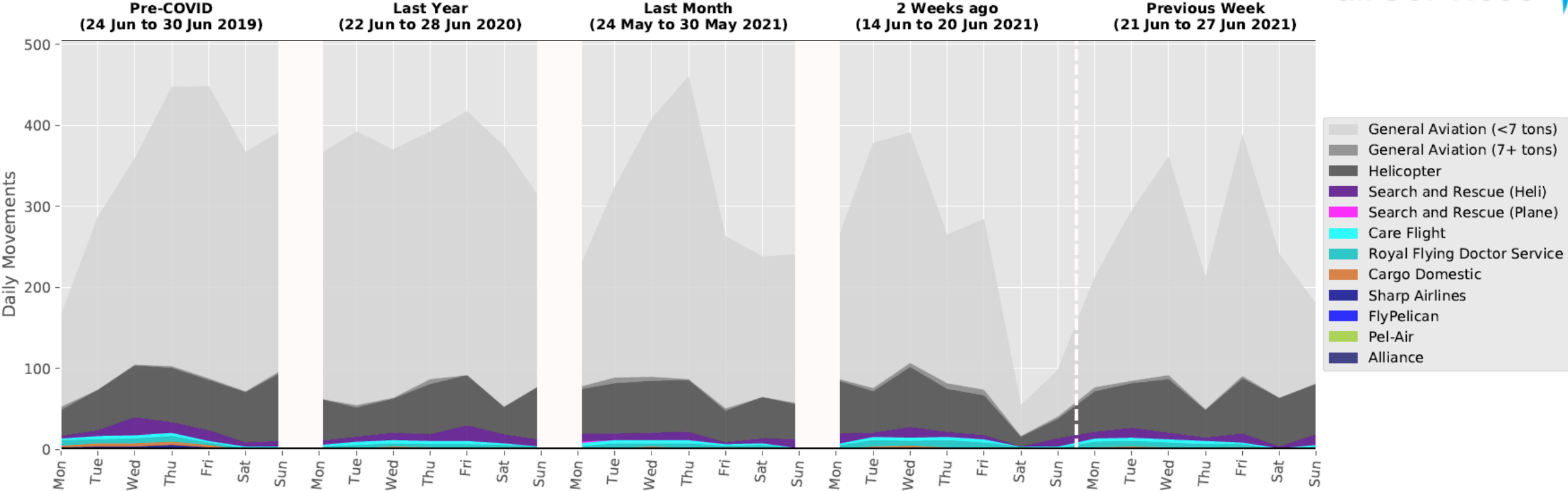




# AIR TRAFFIC MOVEMENTS

Report includes VFR movements!

## Daily Aircraft Movements: BANKSTOWN AIRPORT (YSBK) ATC Tower Location



- Other Internationals are Foreign Airlines as well as Short Haul Internationals of Regional Airlines.

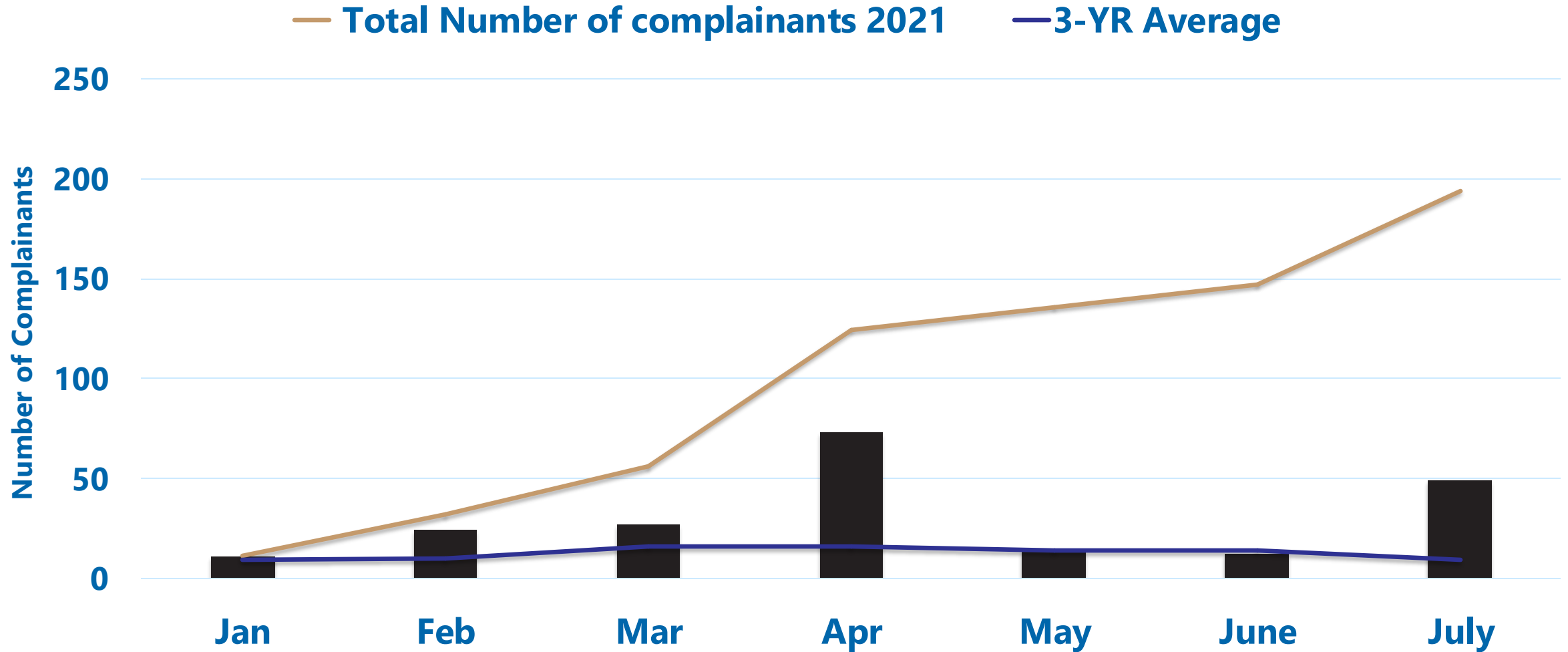
Data shown via Stacked Area plots. The values of each group are displayed on top of each other. Movements exclude military but include VFR without FPL. All dates based on local times.

Q2, 2021

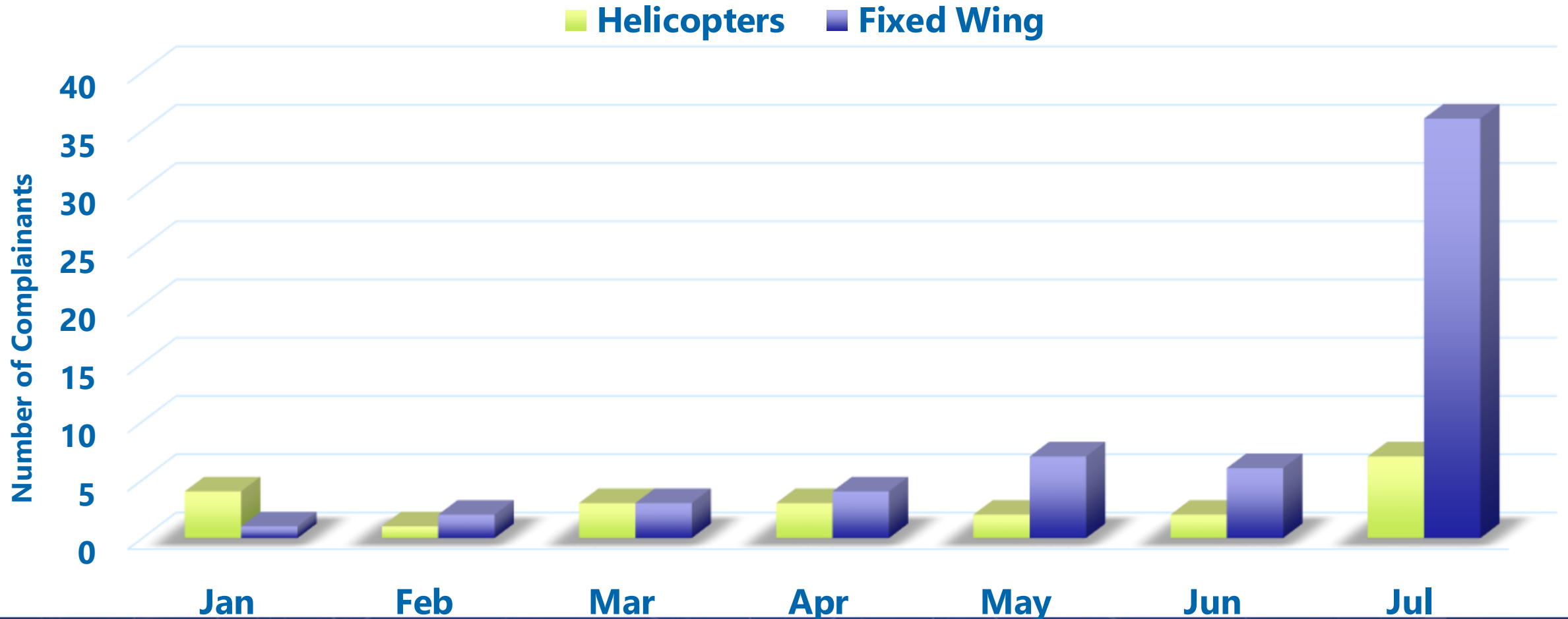
# NCIS COMPLAINTS

# NCIS UPDATE

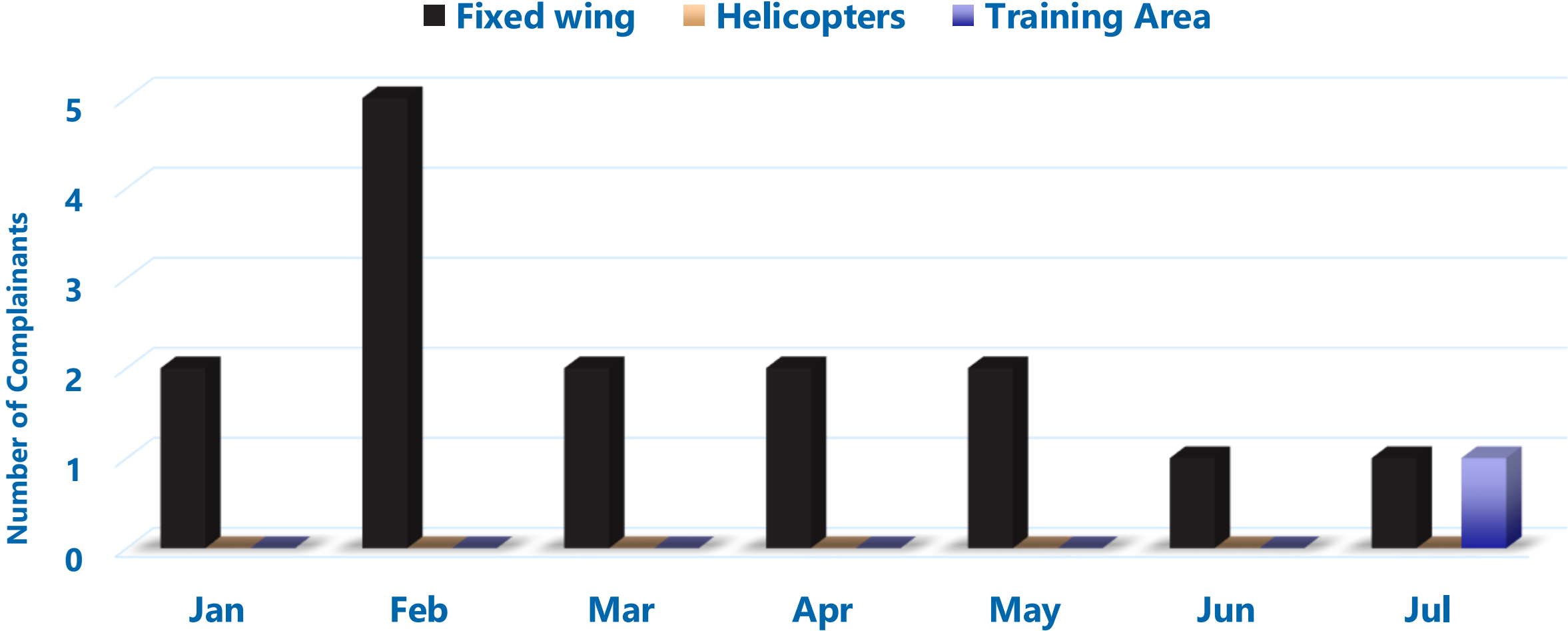
## COMPLAINANT NUMBERS PER MONTH



# NCIS UPDATE EMERGENCY SERVICES OPERATIONS AND NUMBER OF COMPLAINANTS AFFECTED PER MONTH



# NCIS UPDATE - TRAINING OPERATIONS NUMBER OF COMPLAINANTS AFFECTED PER MONTH





# ONLINE REPORT

- Available on our website at:  
<http://www.airservicesaustralia.com/aircraftnoise/airports>
- Select Bankstown and then select complaints
- Select month of interest





# CACG REPRESENTATION



# ANO FINDINGS

- The Aircraft Noise Ombudsman (ANO) has recently completed an investigation into complaints about flight paths and aircraft operations over inner Melbourne
- The lessons from the investigation include:
  - Community engagement should consider a wider audience than the CACG and communities located immediately surrounding an airport
  - Communities under or near flight paths need to be considered as part of the engagement activities
  - Sightseeing operations that occur a considerable distance away from airports can have an impact on communities sensitive to aircraft noise
- The ANO made three recommendations which Airservices has accepted
- The recommendation relevant to this CACG is that:
  - *Airservices invite the CACG to review the adequacy of their representation of their community membership given that the aircraft noise from “smart tracking” flight paths and sightseeing operations affects areas at considerable distances from airports*
- For further information, the full ANO report is available at: [www.ano.gov.au](http://www.ano.gov.au)



# REVIEW OF CACG REPRESENTATION

---

- To aid the CACG in reviewing the adequacy of your membership and representation we have completed the following:
  - We have undertaken a review of aircraft noise complaint hotspots for each CACG location and have shared this information with the airport and CACG chair
  - The complaints hotspots cover the last three years to provide insight into complaints pre-COVID and current operations
  - Detailed information on complaints issues covering 2017 to date are available on our interactive tool available at <https://www.airservicesaustralia.com/community/environment/aircraft-noise/airports/>
- The CACG might also consider the following:
  - Identifying communities under existing and future flight paths as published in the current Master Plan
  - Identifying communities under existing and future Number Above noise contour in either the current Master Plan or relevant Major Development Plans/Approvals documents (as appropriate)
  - Speaking with your operators to identify sightseeing or unusual operations which may impact communities
- For future flight path change projects:
  - We will request the CACG to consider an expansion of community membership to include potentially affected locations for the duration of the project



# THANK YOU

[communityengagement@airservicesaustralia.com](mailto:communityengagement@airservicesaustralia.com)