



---

## Camden Airport stormwater upgrades - taxiway closure notice

Airside stormwater upgrade works start on Monday 5 February 2024, as part of our major upgrade to the stormwater infrastructure at Camden Airport.

These works will require the temporary partial or full closure of taxiways Charlie, Delta and the apron leading to Delta from hangars 740, 756, 765, 723 and 722.

Alternate aircraft access routes will be provided during these closures to minimise disruptions. We have made additional arrangements to accommodate customers impacted by the closure of the apron leading to Taxiway Delta.

TEMPORARY CLOSURES	
DATES	TAXIWAY
5-22 February	Partial closure of Taxiway Delta Closure of apron to Taxiway Delta from Hangars 740, 756, 765, 723 and 722
23 February – 2 March	Continued partial closure of Taxiway Delta
7-29 March	Partial closure of Taxiway Charlie

---

### Alternate access 5-22 February

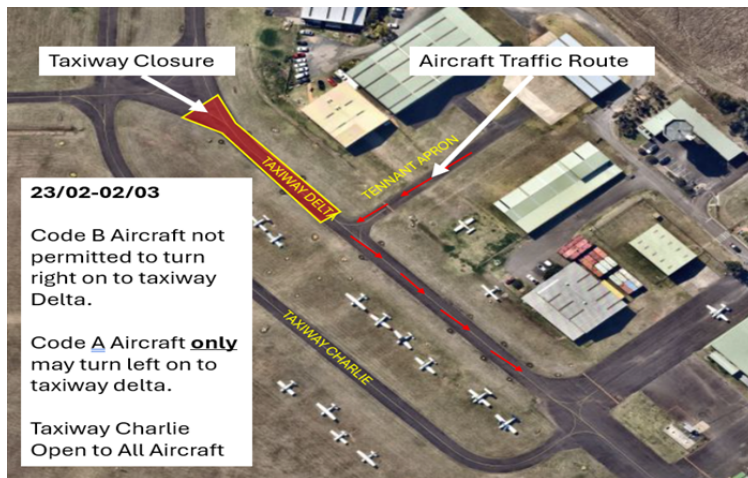
During partial closure of Taxiway Delta and closure of the apron from hangars 740, 756, 765, 723 and 722



---

## Alternate access 23 February-2 March

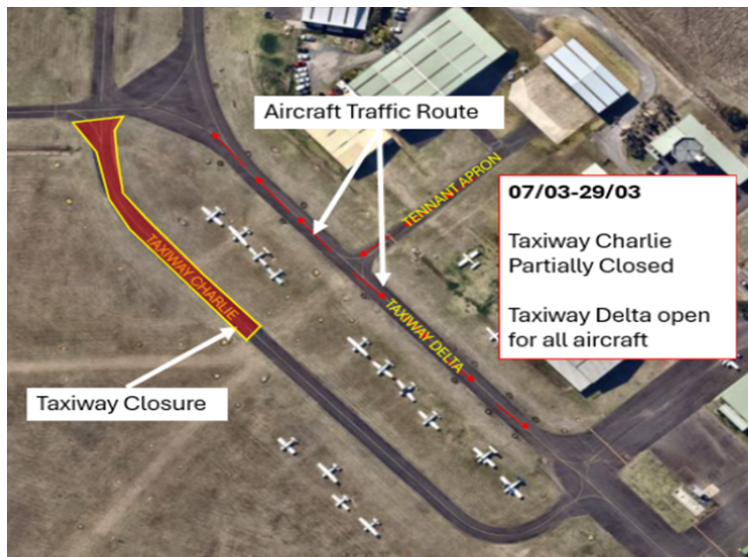
During ongoing partial closure of Taxiway Delta



---

## Alternate access 7-29 March

During partial closure of Taxiway Charlie



---

## Project Updates

We appreciate your cooperation and patience while we complete this important and necessary work to improve the safety and conditions of Camden Airport.

We will provide regular updates during the works, via email and our website: [aeria.co](https://aeria.co)

For any queries, please contact your primary AMG representative or Senior Stakeholder & Communications Manager Peter Munro on [peter.munro@aeria.co](mailto:peter.munro@aeria.co) or 0420 440 654.

**Find out more**

Aeria Management Group  
16A Airport Ave,  
Bankstown Aerodrome, NSW 2200

T: (02) 8709 9400  
E: [info@aeria.co](mailto:info@aeria.co)

**aeria.co**

[Unsubscribe](#)